

EMPIRE EAST HIGHLAND CITY

ARCADIA SITE DEVELOPMENT PLAN

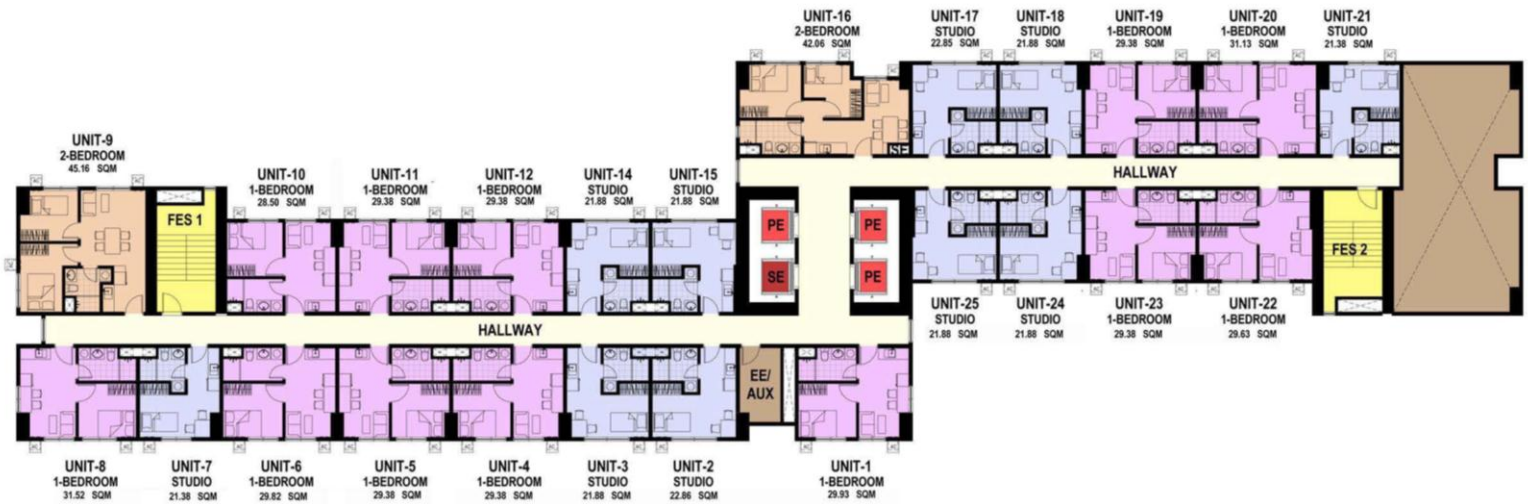


These renderings are based on the architect's perspective and do not form part of an offer or contract. Selling price is established principally on a per unit basis and not on the unit measurement or dimension. Empire East reserves the right to modify these illustrations without prior notice. Clients are invited to verify subsequent changes. As of March 2020. For reference and presentation purposes only.

EMPIRE EAST HIGHLAND CITY

ARCADIA : TOWER 2 FLOOR PLAN

FACING TOWER 1



FACING TOWER 3



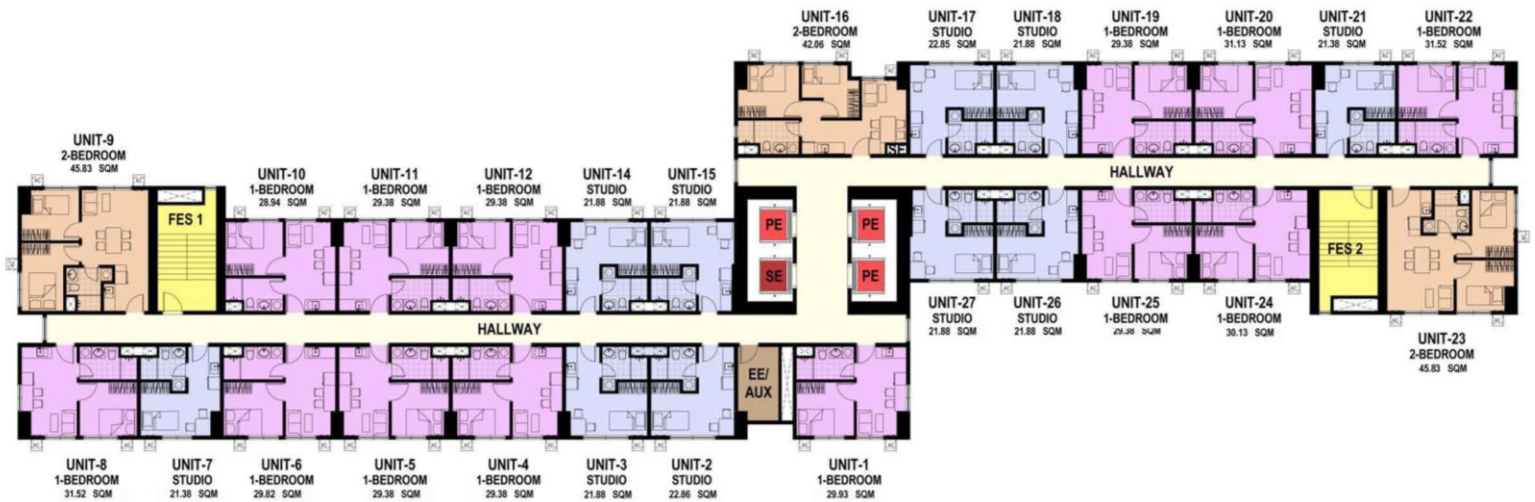
2nd Level

These renderings are based on the architect's perspective and do not form part of an offer or contract. Selling price is established principally on a per unit basis and not on the unit measurement or dimension. Empire East reserves the right to modify these illustrations without prior notice. Clients are invited to verify subsequent changes. As of March 2020. For reference and presentation purposes only.

EMPIRE EAST HIGHLAND CITY

ARCADIA : TOWER 2 FLOOR PLAN

FACING TOWER 1



FACING TOWER 3



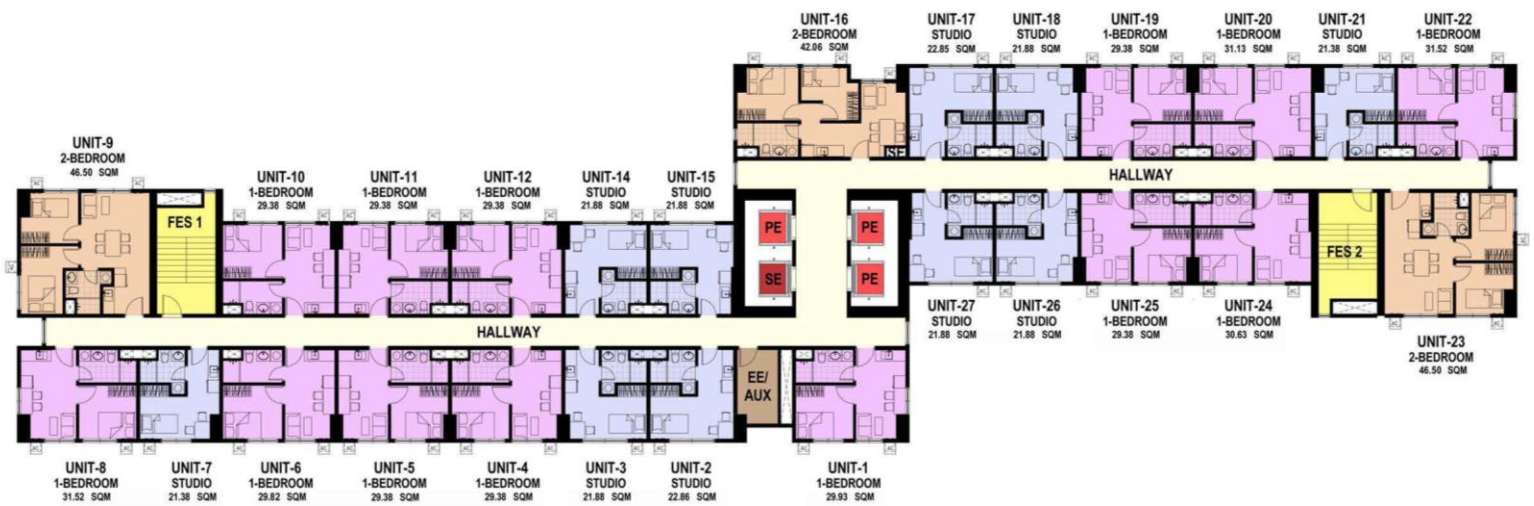
3rd to 6th Level

These renderings are based on the architect's perspective and do not form part of an offer or contract. Selling price is established principally on a per unit basis and not on the unit measurement or dimension. Empire East reserves the right to modify these illustrations without prior notice. Clients are invited to verify subsequent changes. As of March 2020. For reference and presentation purposes only.

EMPIRE EAST HIGHLAND CITY

ARCADIA : TOWER 2 FLOOR PLAN

FACING TOWER 1



FACING TOWER 3

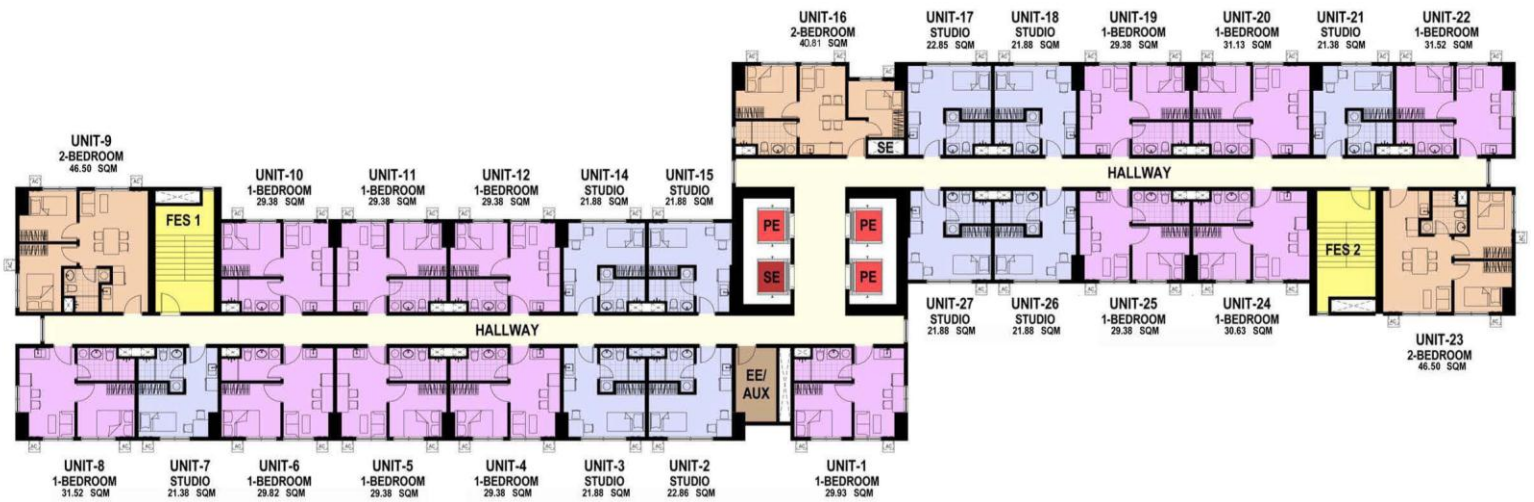


7th to 9th Level
11th to 20th Level
22nd to 37th Level

EMPIRE EAST HIGHLAND CITY

ARCADIA : TOWER 2 FLOOR PLAN

FACING TOWER 1



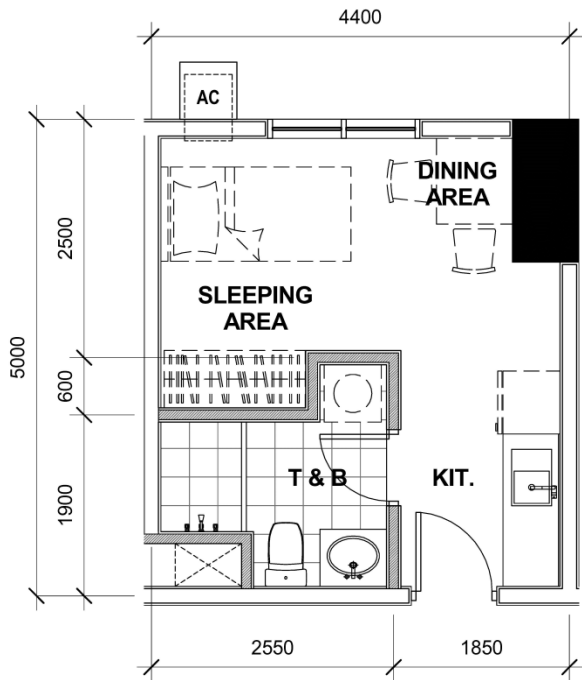
FACING TOWER 3



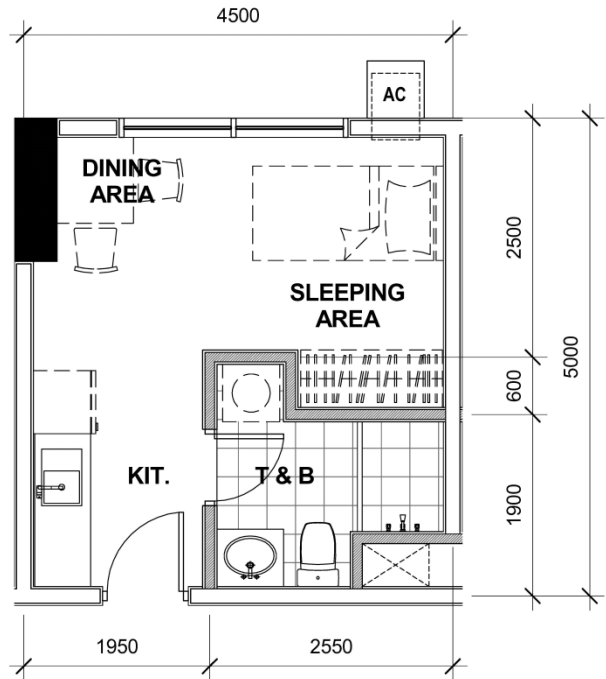
10th Level
21st Level

These renderings are based on the architect's perspective and do not form part of an offer or contract. Selling price is established principally on a per unit basis and not on the unit measurement or dimension. Empire East reserves the right to modify these illustrations without prior notice. Clients are invited to verify subsequent changes. As of March 2020. For reference and presentation purposes only.

**ARCADIA : TOWER 2 - UNIT LAYOUT
 TYPICAL STUDIO UNITS**



21.38 SQM
 2nd to 37th Level
 Unit 7, 21



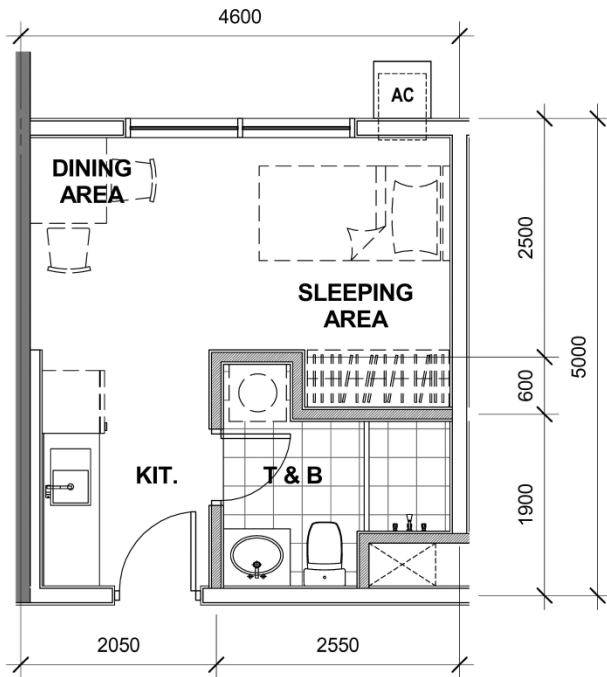
21.88 SQM
 2nd to 37th Level
 Unit 3, 14, 18

2nd Level
 Unit 24

3rd to 37th Level
 Unit 26

EMPIRE EAST HIGHLAND CITY

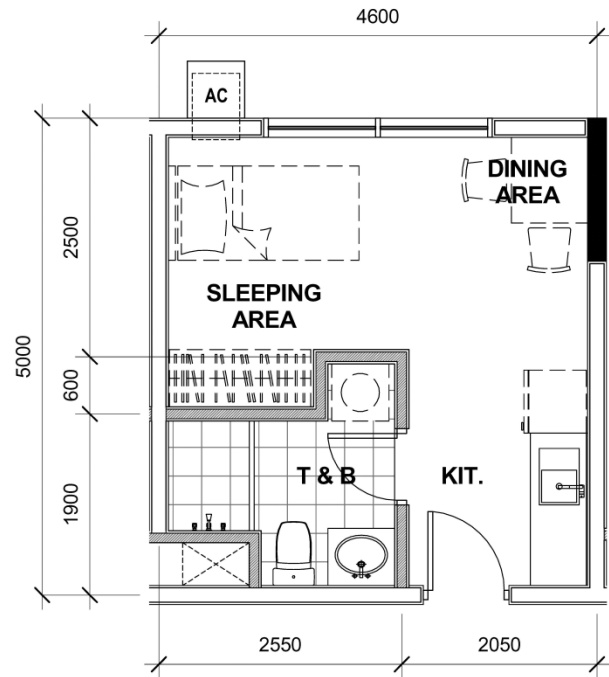
ARCADIA : TOWER 2 - UNIT LAYOUT TYPICAL STUDIO UNITS



21.88 SQM
2nd to 37th Level
Unit 15

2nd Level
Unit 25

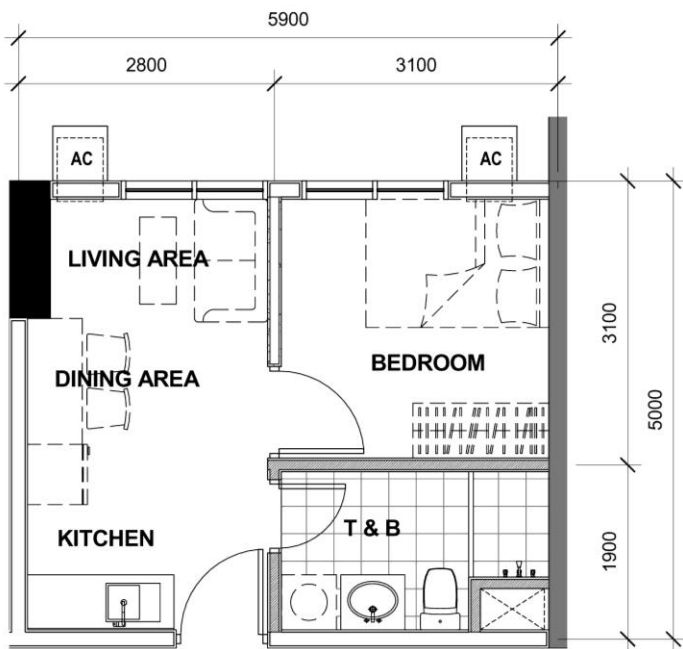
3rd to 37th Level
Unit 27



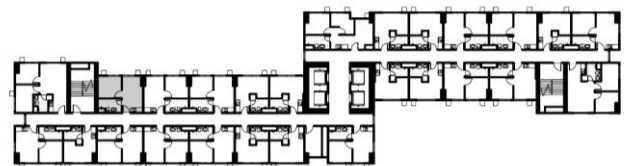
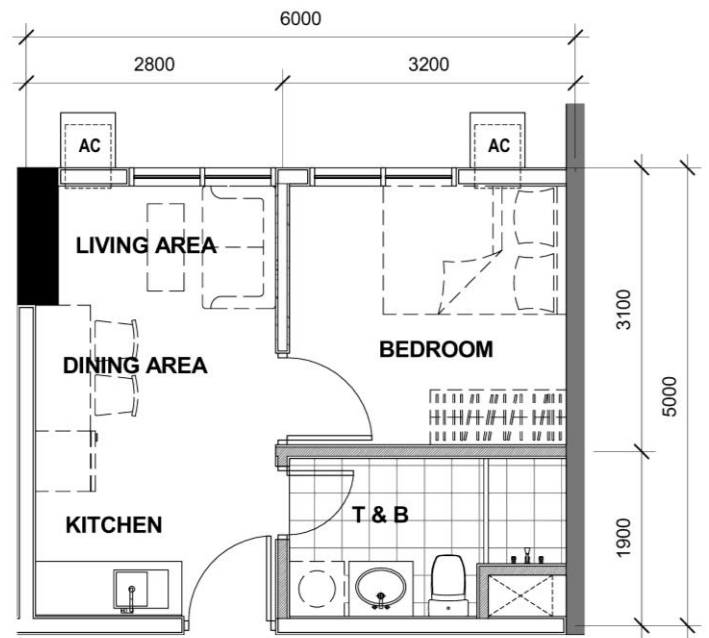
22.86 SQM
2nd to 37th Level
Unit 2, 17

EMPIRE EAST HIGHLAND CITY

CLUSTER 1 : TOWER 2 - UNIT LAYOUT TYPICAL ONE BEDROOM UNIT



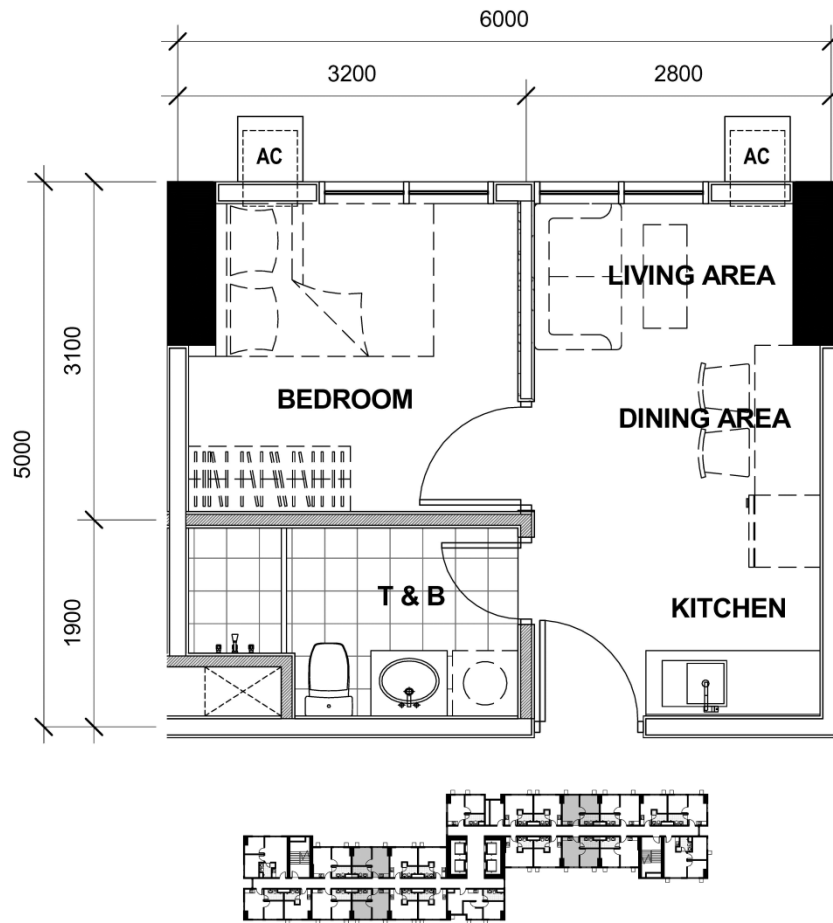
28.50 SQM
2nd Level
Unit 10



28.94 SQM
3rd to 6th Level
Unit 10

EMPIRE EAST HIGHLAND CITY

ARCADIA : TOWER 2 - UNIT LAYOUT TYPICAL ONE BEDROOM UNIT



29.38 SQM

2nd Level

Unit 23

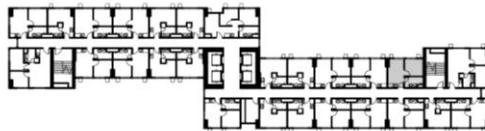
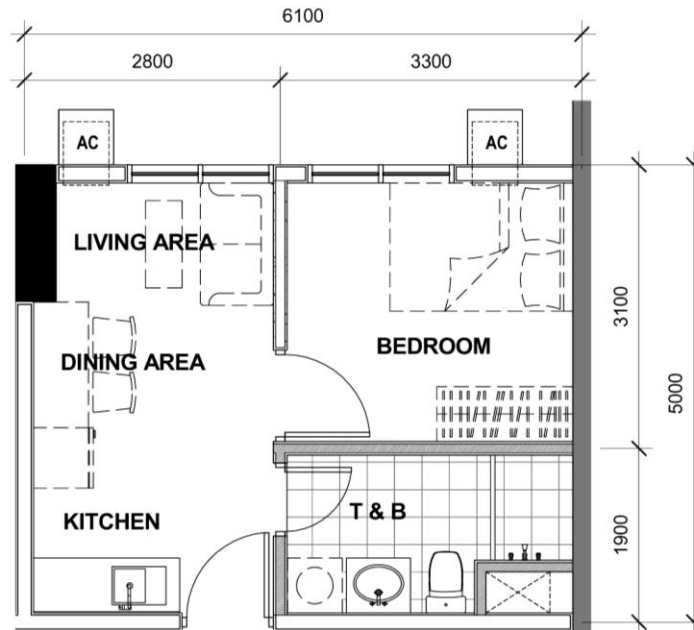
2nd to 37th Level

Unit 4, 5, 11, 12, 19

3rd to 37th Level

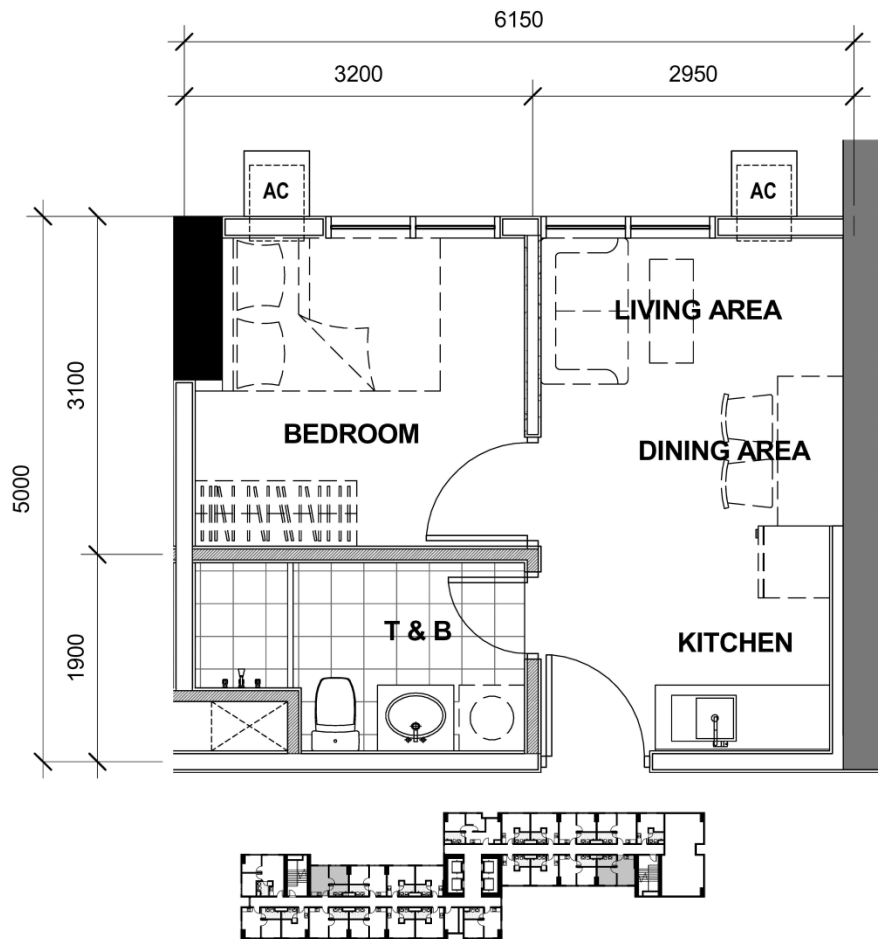
Unit 25

ARCADIA : TOWER 2 - UNIT LAYOUT
TYPICAL ONE BEDROOM UNIT



29.38 SQM
7th to 37th Level
Unit 10

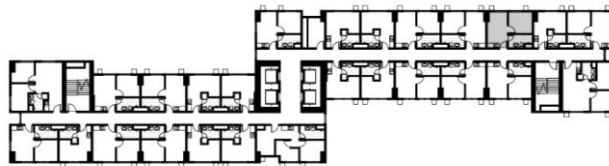
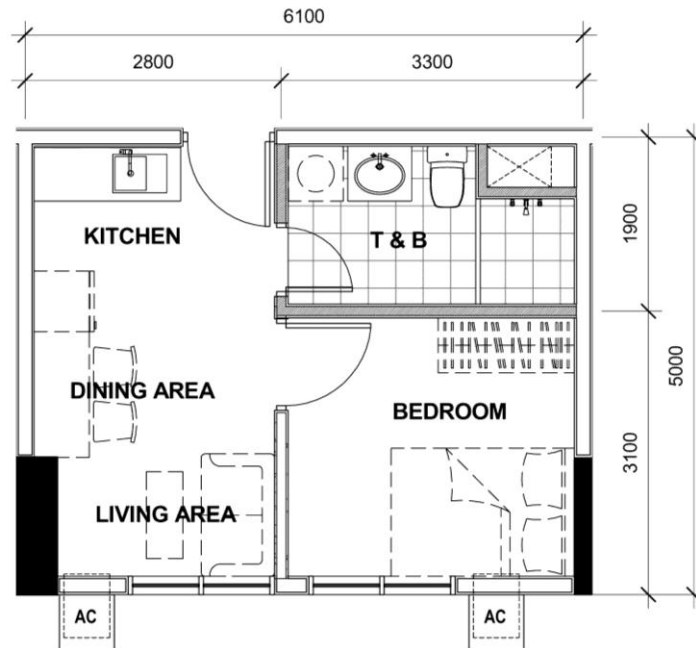
ARCADIA : TOWER 2 - UNIT LAYOUT
TYPICAL ONE BEDROOM UNIT



29.63 SQM
2nd Level
Unit 22

EMPIRE EAST HIGHLAND CITY

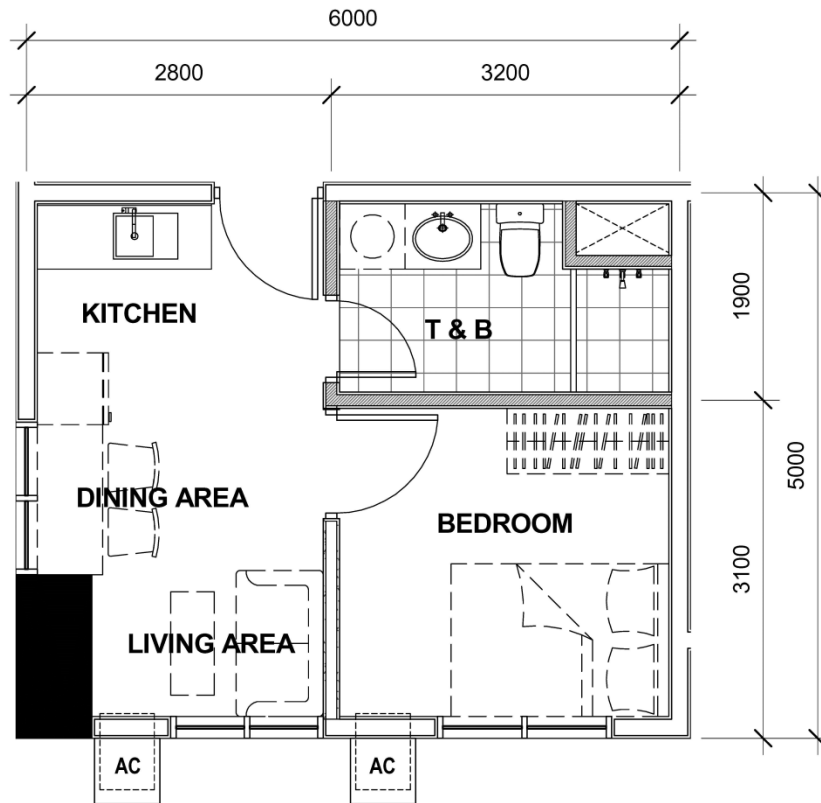
CLUSTER 1 : TOWER 2 - UNIT LAYOUT TYPICAL ONE BEDROOM UNIT



29.82 SQM
2nd to 37th Level
Unit 6

EMPIRE EAST HIGHLAND CITY

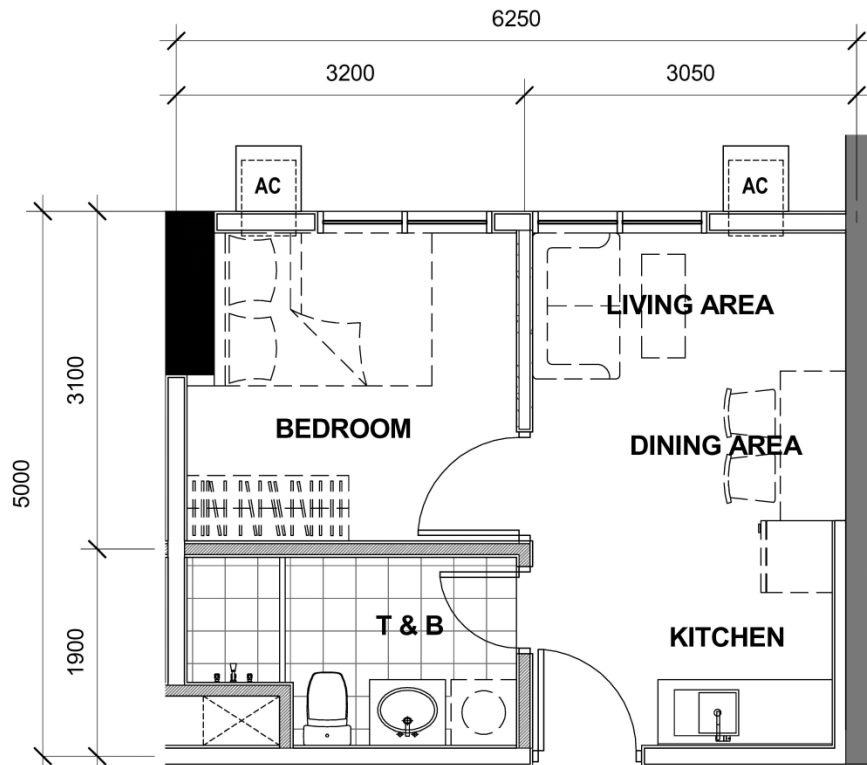
ARCADIA : TOWER 2 - UNIT LAYOUT TYPICAL ONE BEDROOM UNIT



29.93 SQM
2nd to 37th Level
Unit 1

EMPIRE EAST HIGHLAND CITY

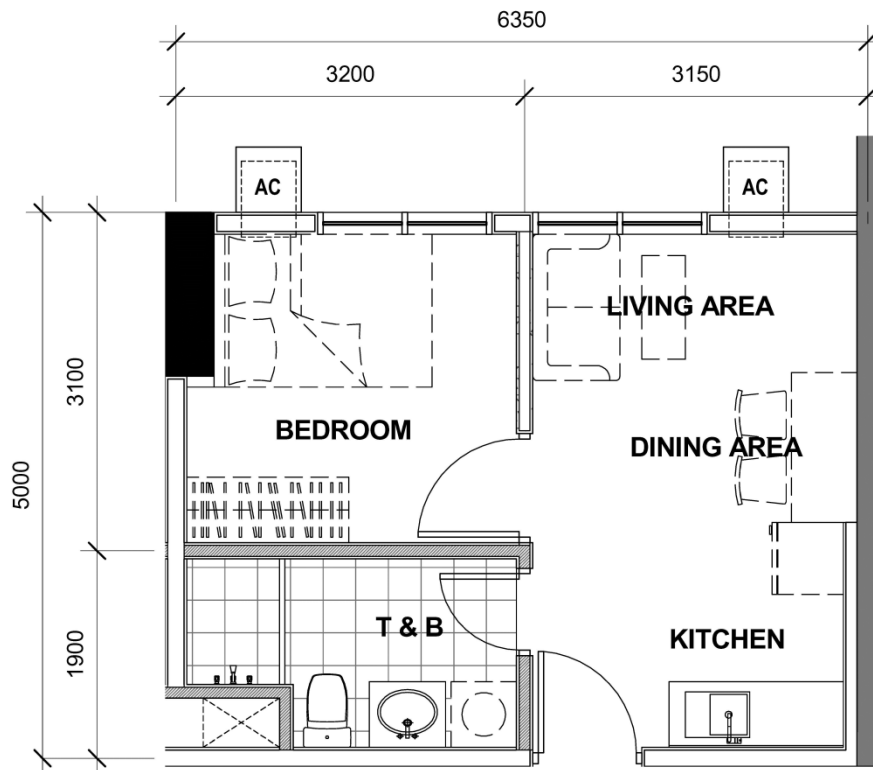
ARCADIA : TOWER 2 - UNIT LAYOUT TYPICAL ONE BEDROOM UNIT



30.13 SQM
3rd to 6th Level
Unit 24

EMPIRE EAST HIGHLAND CITY

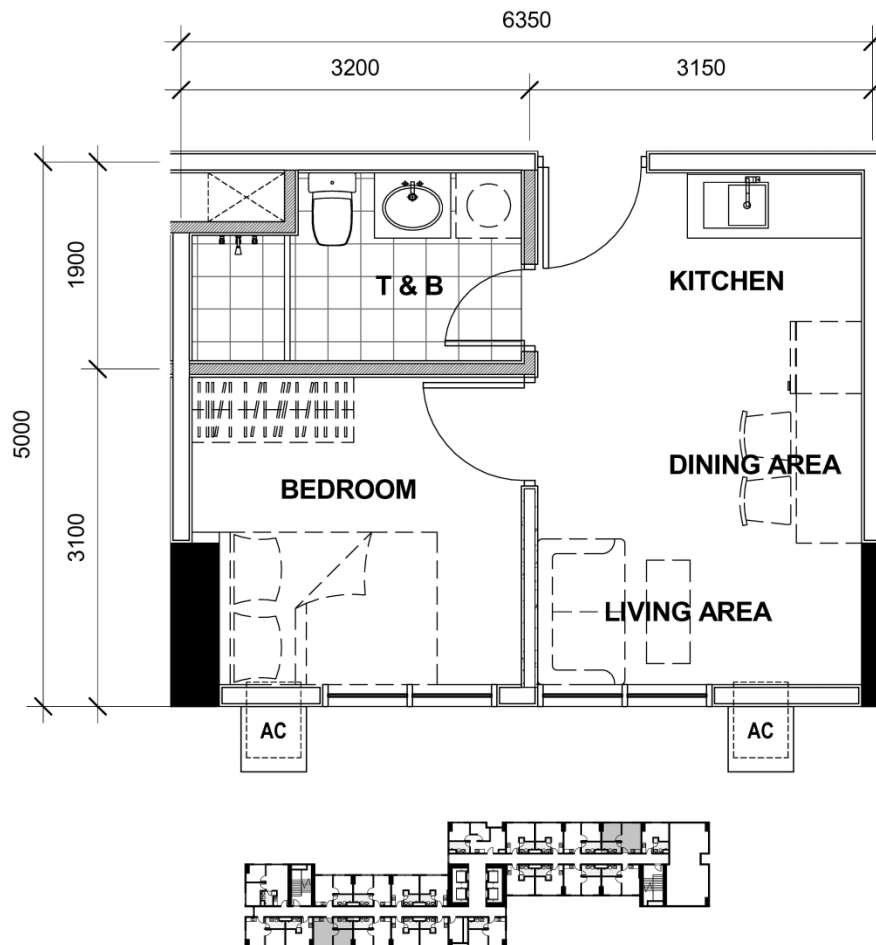
ARCADIA : TOWER 2 - UNIT LAYOUT TYPICAL ONE BEDROOM UNIT



30.63 SQM
7th to 37th Level
Unit 24

EMPIRE EAST HIGHLAND CITY

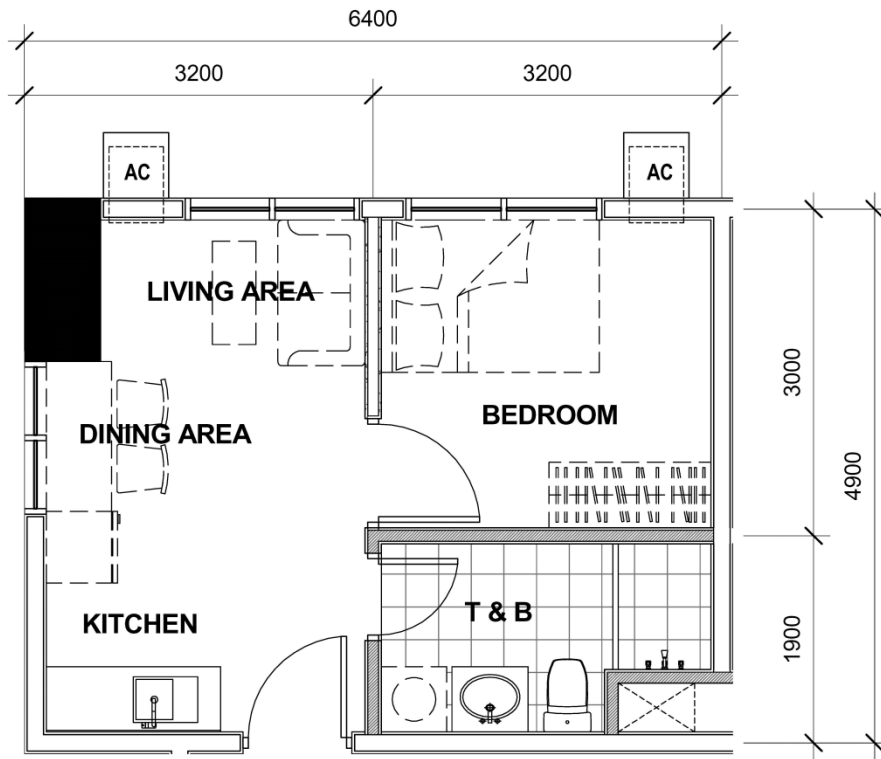
ARCADIA : TOWER 2 - UNIT LAYOUT TYPICAL ONE BEDROOM UNIT



31.13 SQM
2nd to 37th Level
Unit 20

EMPIRE EAST HIGHLAND CITY

ARCADIA : TOWER 2 - UNIT LAYOUT TYPICAL ONE BEDROOM UNIT

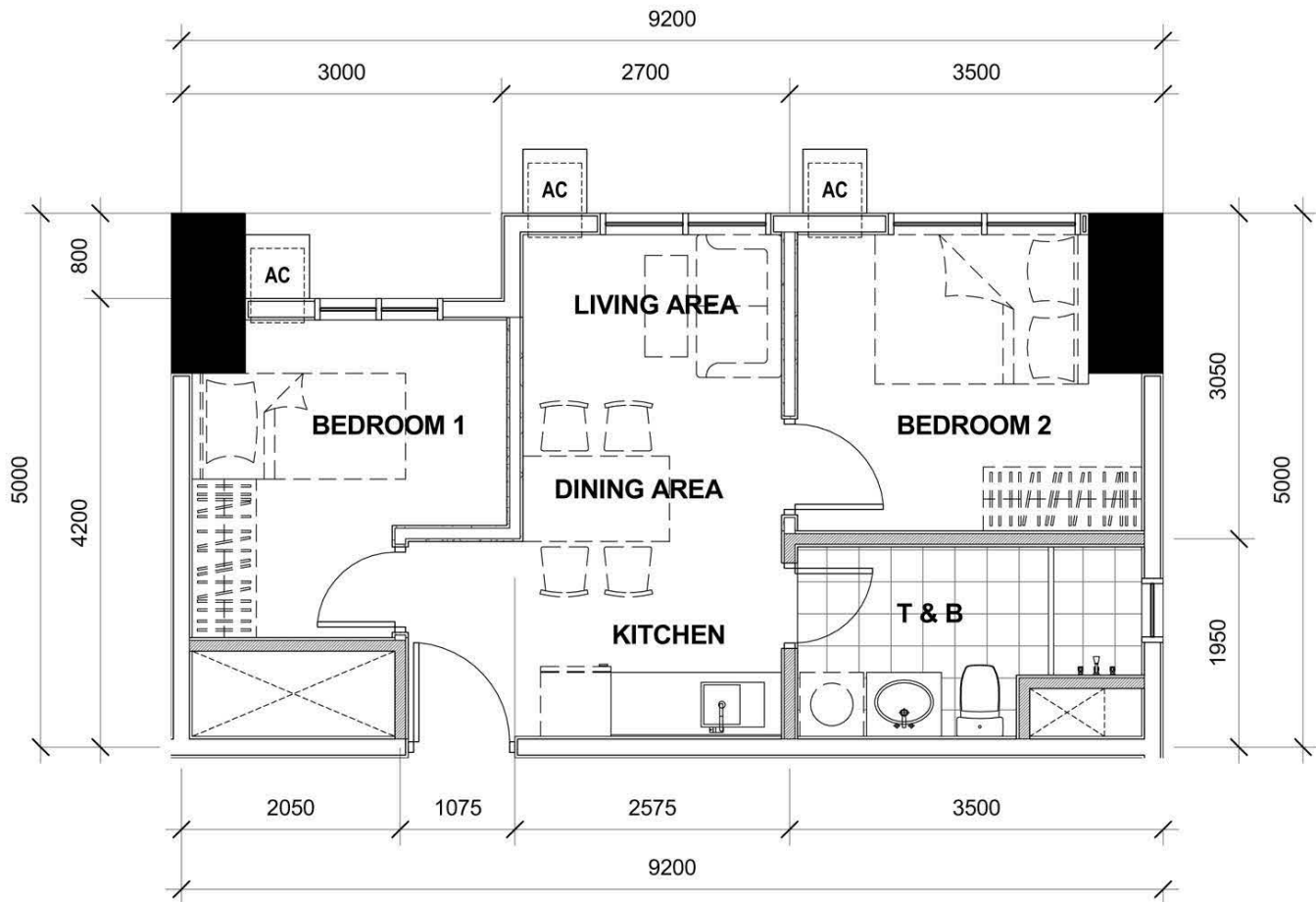


31.52 SQM
2nd to 37th Level
Unit 8

3rd to 37th Level
Unit 22

EMPIRE EAST HIGHLAND CITY

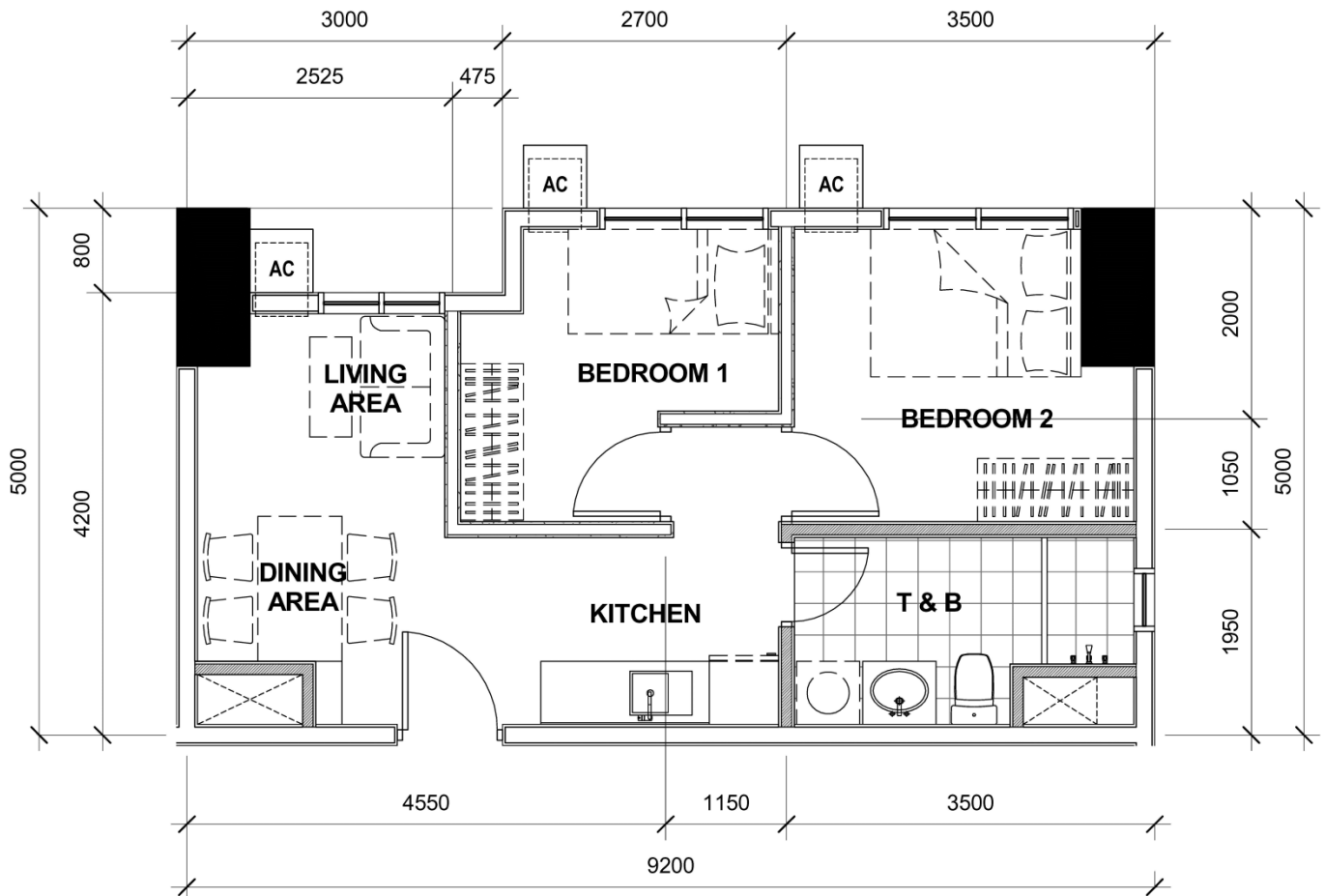
ARCADIA : TOWER 2 - UNIT LAYOUT TYPICAL TWO BEDROOM UNIT



40.81 SQM
10th and 21st Level
Unit 16

EMPIRE EAST HIGHLAND CITY

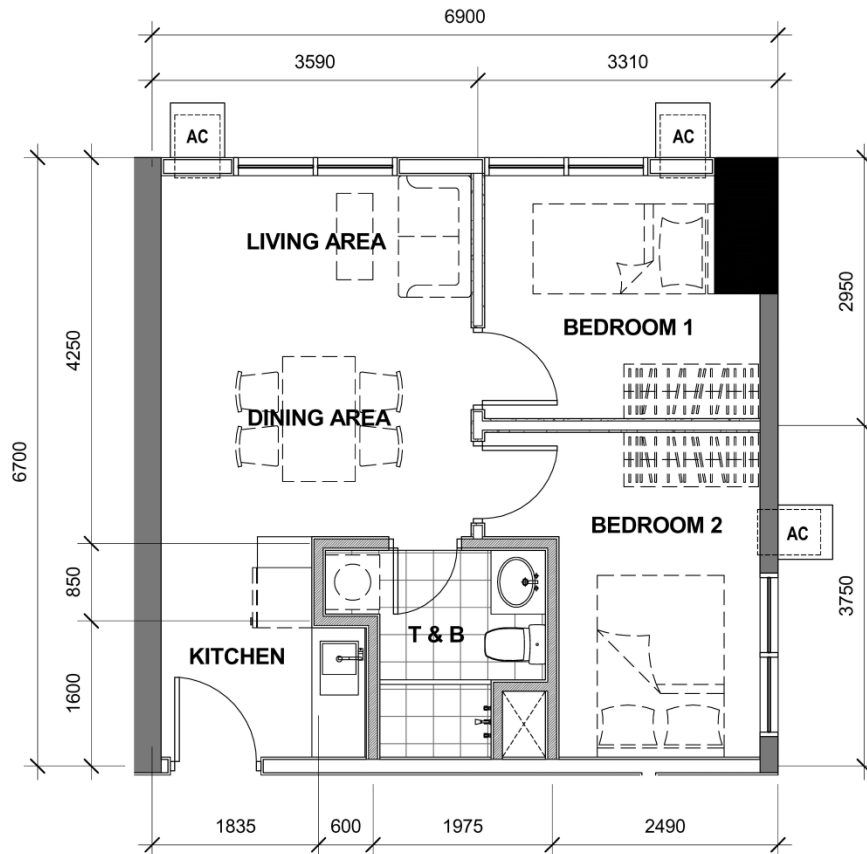
ARCADIA : TOWER 2 - UNIT LAYOUT TYPICAL TWO BEDROOM UNIT



42.06 SQM
 2nd to 9th Level
 11th to 20th Level
 22nd to 37th Level
 Unit 16

EMPIRE EAST HIGHLAND CITY

ARCADIA : TOWER 2 - UNIT LAYOUT TYPICAL TWO BEDROOM UNIT

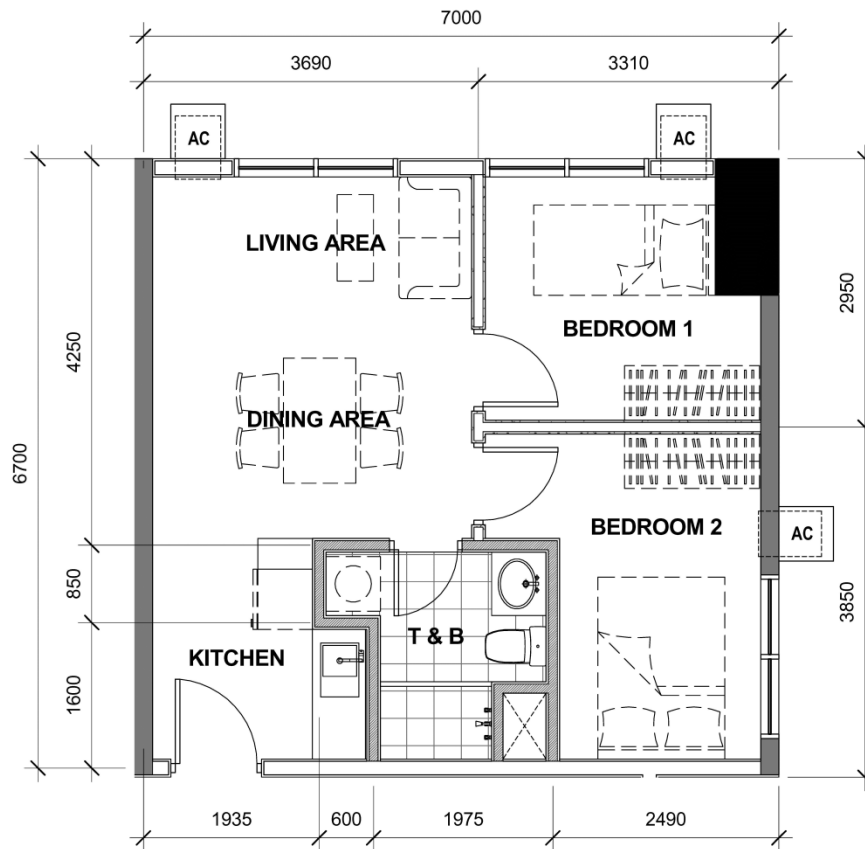


45.16 SQM
2nd Level
Unit 9

These renderings are based on the architect's perspective and do not form part of an offer or contract. Selling price is established principally on a per unit basis and not on the unit measurement or dimension. Empire East reserves the right to modify these illustrations without prior notice. Clients are invited to verify subsequent changes. As of March 2020. For reference and presentation purposes only.

EMPIRE EAST HIGHLAND CITY

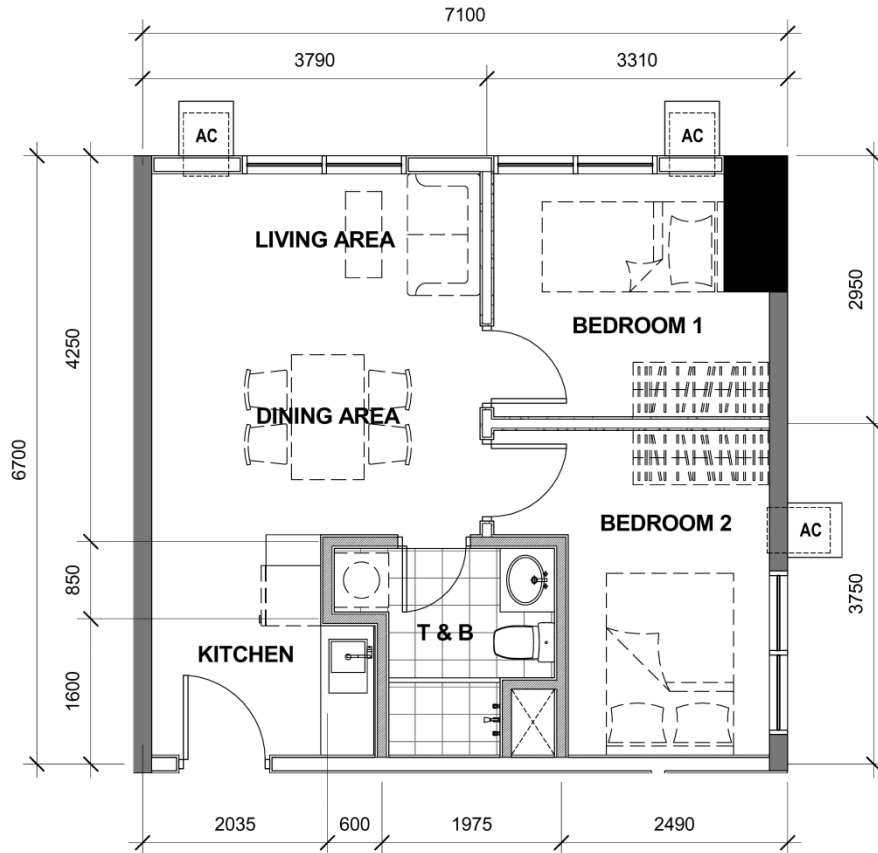
ARCADIA : TOWER 2 - UNIT LAYOUT TYPICAL TWO BEDROOM UNIT



45.83 SQM
3rd to 6th Level
Unit 9, 23

EMPIRE EAST HIGHLAND CITY

ARCADIA : TOWER 2- UNIT LAYOUT TYPICAL TWO BEDROOM UNIT



46.50 SQM
7th to 37th Level
Unit 9, 23